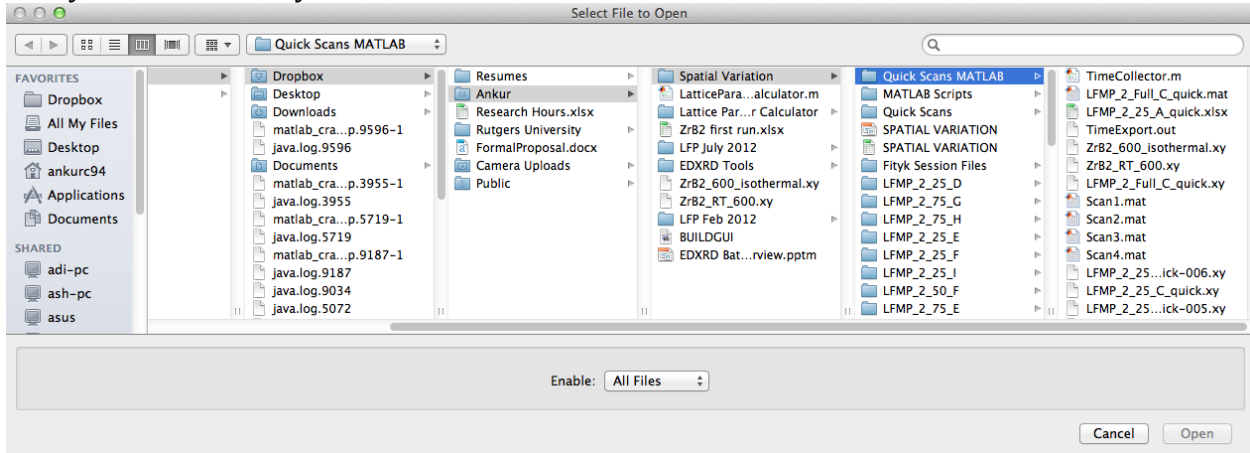


# Time Stamp Extractor

By Ankur Choksi

Guide to use the Time Stamp Extractor MATLAB Script in order to obtain the time elapsed during each scan as well as the time at which each individual scan was taken. File that can be analyzed must be obtained in the standard Brookhaven format.

- 1.) Place MATLAB script *TimeCollector.m* in the same folder of the file you want to analyze
- 2.) Open the *TimeCollector.m* script and after MATLAB opens, run the program
- 3.) After running the program, a prompt will appear requesting to select a file to open. Select the file that you want to analyze.



- 4.) After selecting the file, the program will calculate the elapsed time by subtracting in seconds the difference between the time stamps on subsequent scan header information. The elapsed time is displayed after each scan is analyzed.

```
Command Window

>> TimeCollector

Elapsed_Time =

    0

Elapsed_Time =

   10

Elapsed_Time =

   21

Elapsed_Time =

   31

Elapsed_Time =

   42

Elapsed_Time =

   52

Elapsed_Time =

   63
```

- 5.) The prompt to select a file will reopen. If you click cancel, the while loop which is running the program will terminate itself, thus ending the program.
- 6.) After each scan, the program saves the collected time stamps in a MATLAB variable format as the file name in the same folder as the original file destination path. To recover the variable, simply open the variable using MATLAB and the variable will be present in the variable workspace.